




Oxαpex®

hemoglobin betafumaryl (bovine)

  
**RAPID  
OXYGEN  
DELIVERY**

Haemoglobin based  
therapeutic for  
dogs with anaemia



New α Innovation

# Transfusion with blood products is vital for treating anaemic dogs

up to  
**11%**

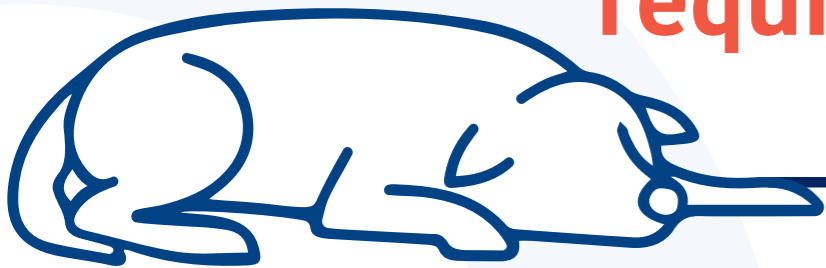
Up to 11 out of 100 dogs are diagnosed with anaemia\*

Severe anaemia can lead to life threatening conditions!

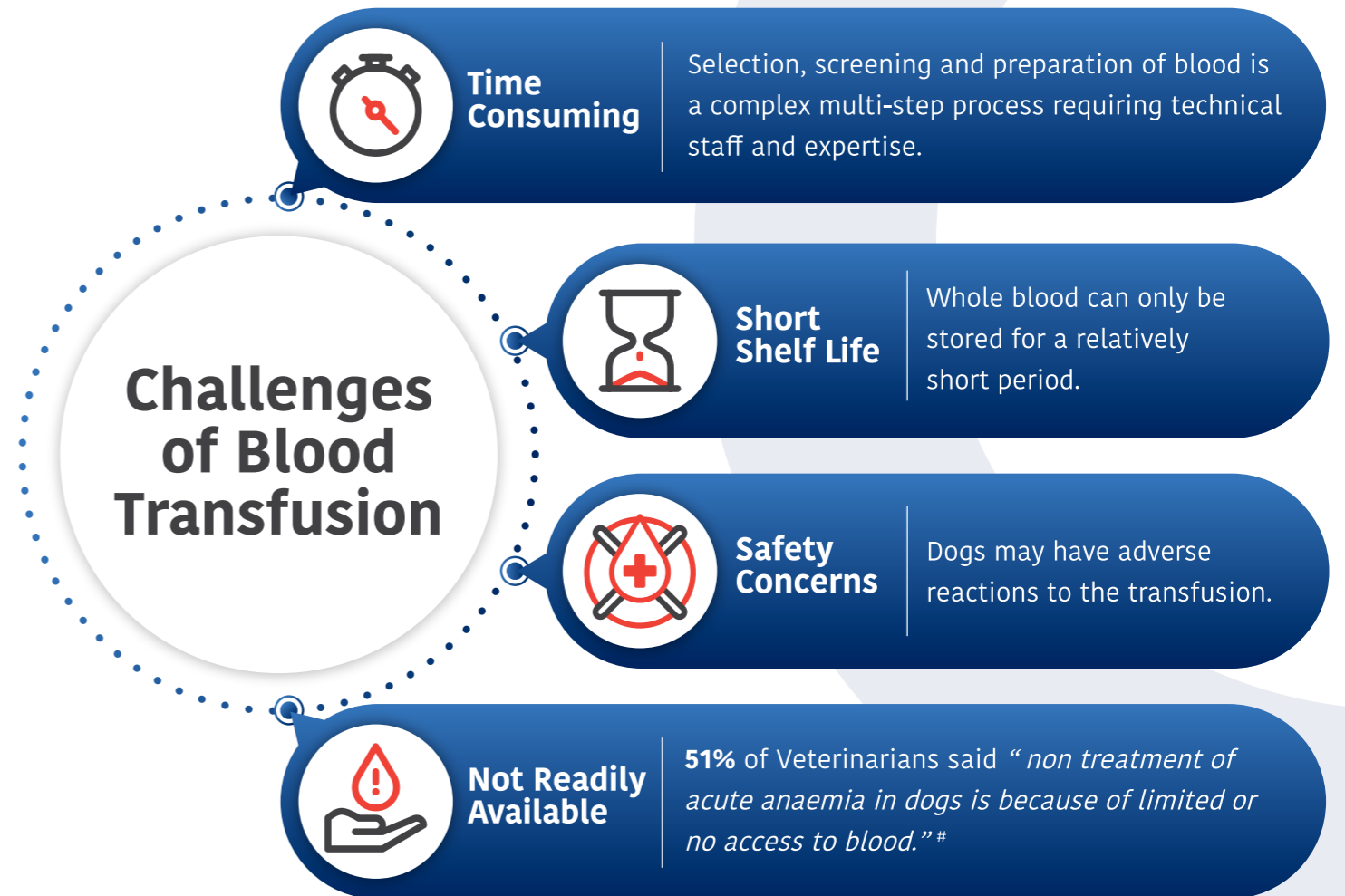


When packed cell volume (PCV) drops too rapidly, or below a critical level, tissues will become severely hypoxic.

**Blood transfusion is required**



# Challenges of blood transfusion



Reference :

\* Elizabeth Lund, *Population analyses of anemia in Pets*, Data Savant, 2007

Reference :

# Market Research, “Anaemia – Understanding the Companion Animal Market”, Kynetec Report, November 2019

# Oxαpex®, a haemoglobin based therapeutic, overcomes the challenges of blood transfusion

## Novel stroma-free haemoglobin solution

- Source of origin: **Bovine blood from New Zealand**
- Recognized by the OIE\* as having negligible risk of Bovine Spongiform Encephalopathy
- 1 mL of Oxapex contains 65 mg hemoglobin betafumaril (bovine)

## Highly purified and stabilized tetramer

- 65 kDa molecular weight, resembles native haemoglobin

## Tissue oxygenation enhancement

- Increases systemic plasma haemoglobin in anaemic dogs

## High quality manufacturing

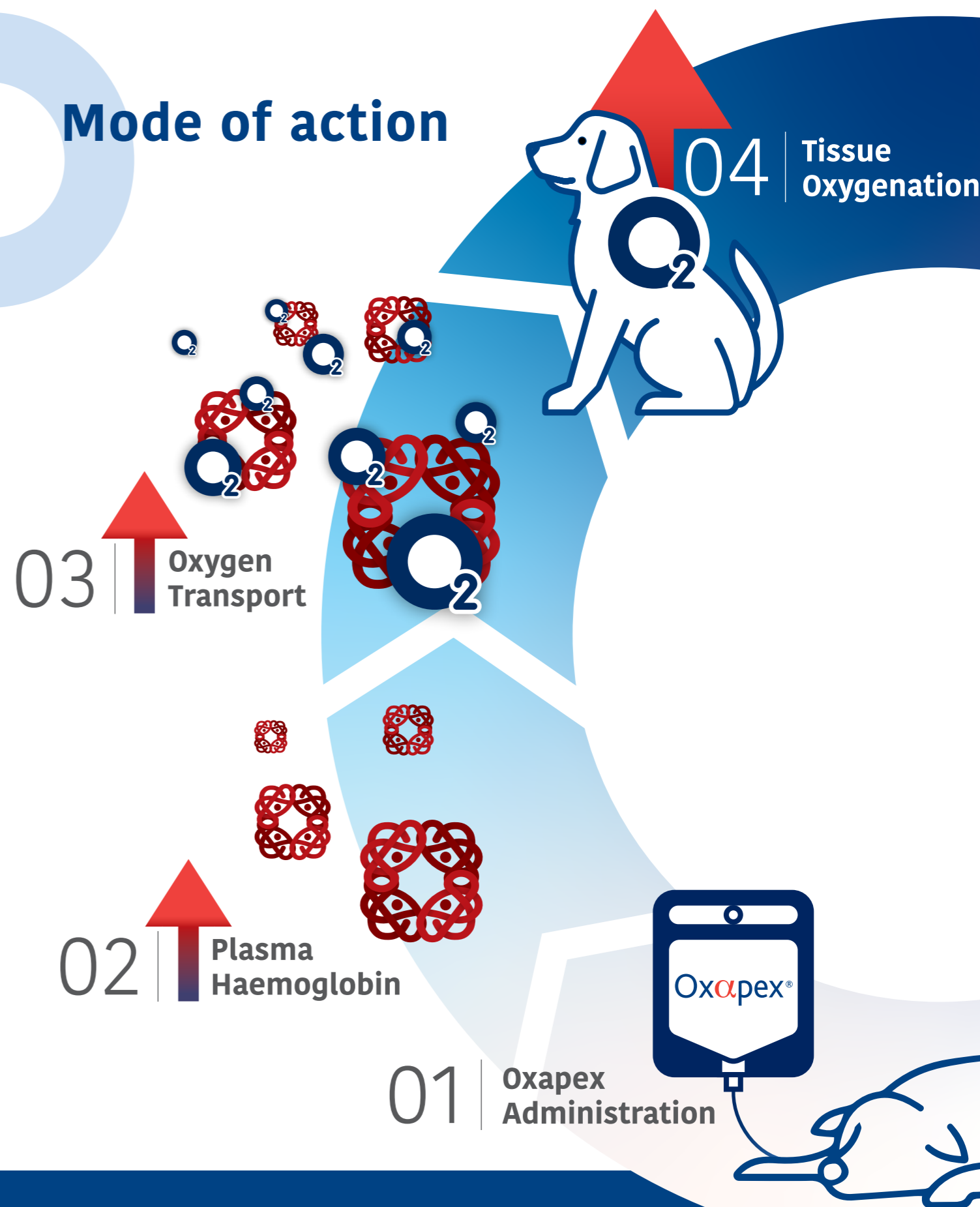
- GMP-certified facilities



Reference :

\* OIE: The World Organization for Animal Health, is the organization that assesses Mad Cow Disease (Bovine Spongiform Encephalopathy) status of a specified country or zone.

## Mode of action



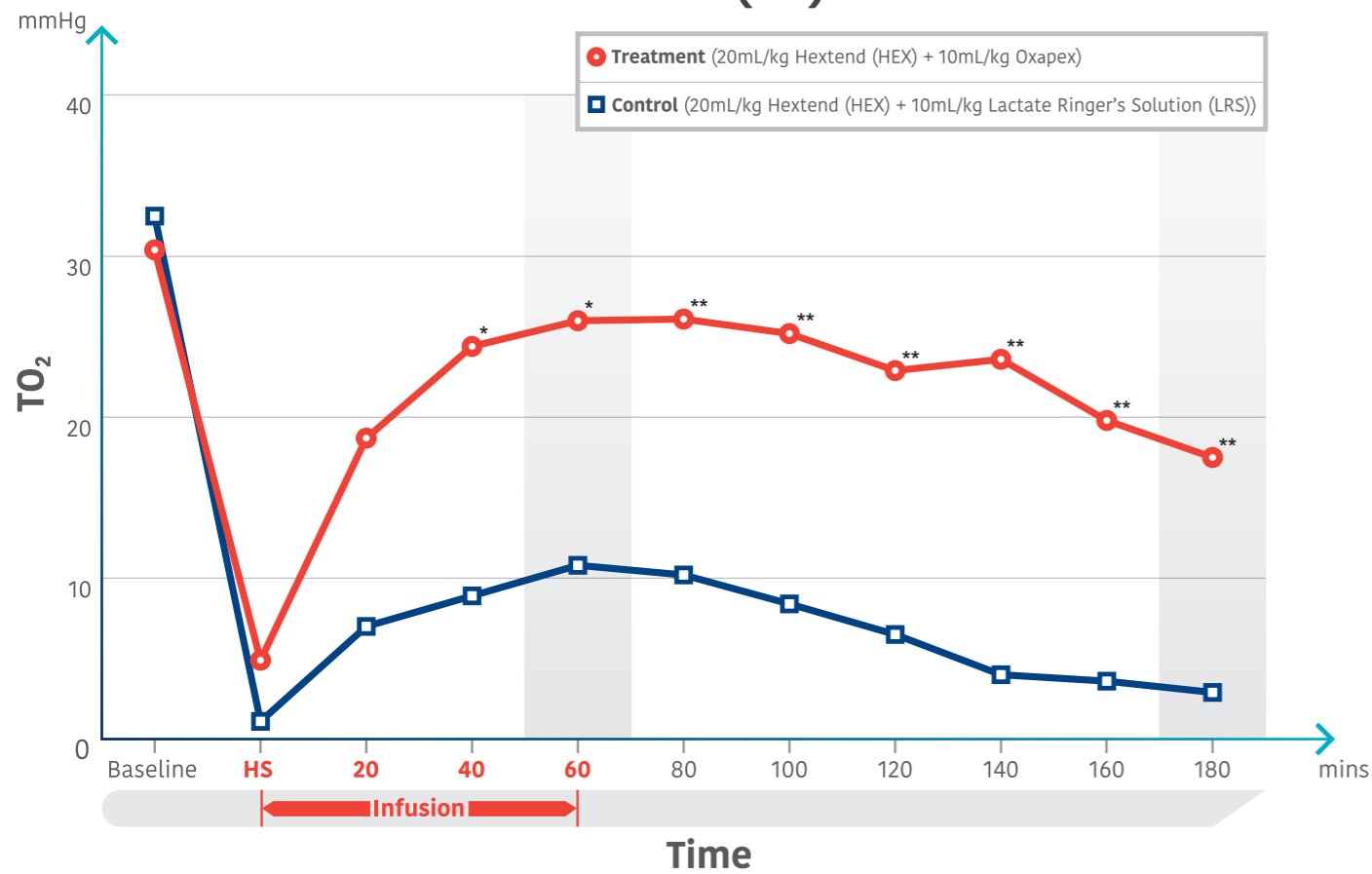
# Rapid restoration of tissue oxygenation (TO<sub>2</sub>)

**Fast onset**  
of action to increase  
**TO<sub>2</sub>** ↑

**86% restoration**  
of TO<sub>2</sub> to baseline levels  
in 60mins

**Sustain**  
TO<sub>2</sub> for **180mins**

## TISSUE OXYGENATION (TO<sub>2</sub>) IN A HAEMORRHAGIC SHOCK (HS) STUDY IN DOGS<sup>1,2</sup>

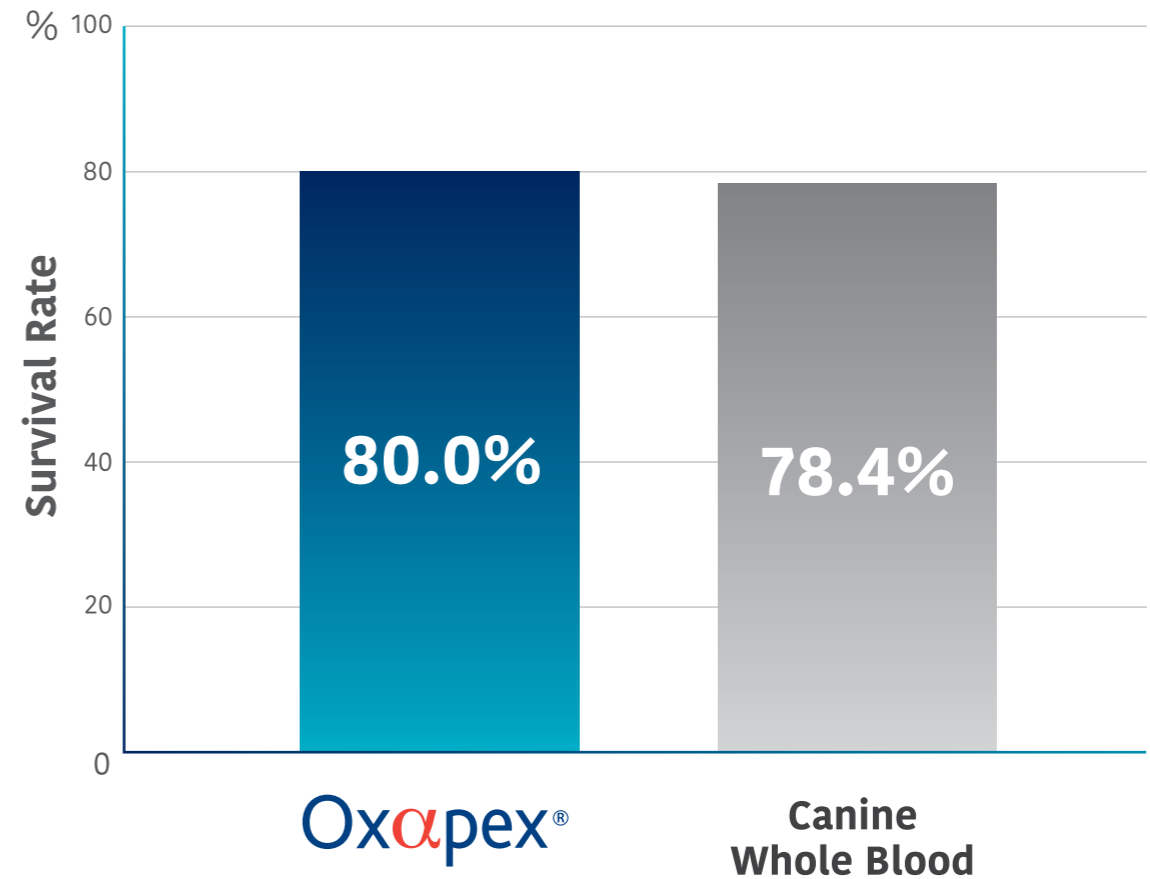


Data showed in Mean ± SEM; \*p < 0.05; \*\*p < 0.01

# Rescue dogs even in severe anaemia

Survival rate of dogs treated with Oxapex is **comparable to** that of whole blood treatment 24-hour post-resuscitation.<sup>3</sup>

## 24-HOUR POST-RESUSCITATION SURVIVAL RATE\*



Reference :

1 Muir WW et al. , *Critical Care Research and Practice*, Vol. 10. ID 864237, 2014

A controlled, dose-dependent study in the USA investigating the effects of Oxapex administration following severe oxygen debt produced by haemorrhagic shock in dogs.

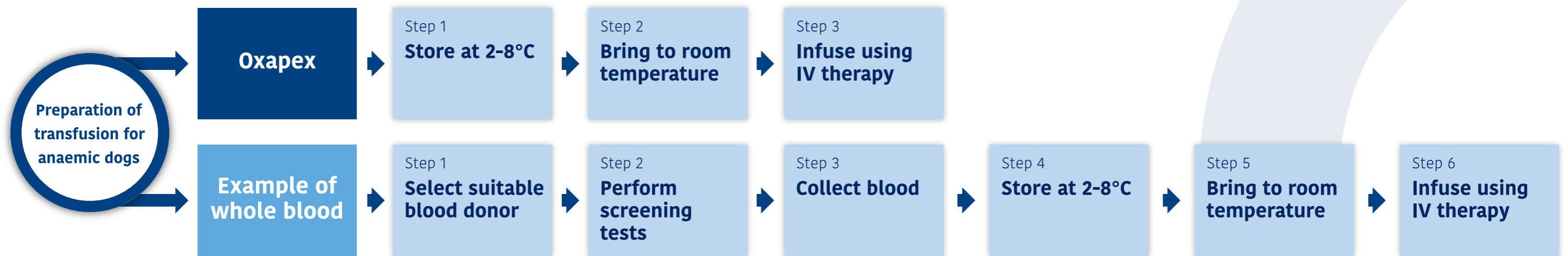
2 Data on File. Study No. SPD12-012

Reference :

3 Data on File, *Randomized and Controlled Trial to Evaluate the Efficacy of a Single Dose of OC99 (10 mL/kg) on 24 Hours Post-resuscitation Survival and Clinically Relevant Parameters in a Model of Hemorrhage-induced Controlled Oxygen Imbalance in Beagle Dogs* (Study No.: EX-PD2017010-01)

\* Dogs with hypovolemic shock

# Readily available and superior shelf life compared to whole blood



	Readily Available		Stable
	Donor selection and blood collection	Blood typing and cross matching	Shelf life
Oxapex	Not required	Not required	Prolonged
Whole Blood	Required	Maybe Required	Short

**Remarks:** 1. Oxapex should be stored at 2°C-8°C. Do not freeze. Protect from light.  
 2. Oxapex should be brought to room temperature prior to administration.

3. Do not microwave or heat above 37°C.  
 4. Place the product contained within the outer wrapper in a warmer (e.g. water bath) with temperature below 37°C for about 10 minutes prior to infusion.

## Ready to administer

- ⦿ **Infusion for intravenous use**
- ⦿ **Dose: 5 - 30 mL/kg**
  - ⦿ **recommended dose: 10 mL/kg**
  - ⦿ **to be selected based on patient condition**
- ⦿ **Infusion rate: 10 mL/kg/hr**
- ⦿ **Pack size: 100 mL/bag**



For single dose and one-time administration only

Use immediately after first opening the immediate packaging

Administer using aseptic technique via a blood transfusion set with a filter and intravenous catheter



## Reliable with proven safety profile

### Minimal side effects:

- ⦿ **Reddish brown discoloration of mucous membranes, tissues, urine and faces**
- ⦿ **Mild and transient GI effects, e.g., vomiting, diarrhoea**
- ⦿ **Occasional sneezing**
- ⦿ **Reactions at the site of infusion, e.g., redness, swelling**

### CONTRAINDICATIONS

- ⊗ Dogs with identified kidney disease
- ⊗ Dogs predisposed to circulatory overload
- ⊗ Dogs with advanced cardiac disease especially congestive heart failure
- ⊗ Dogs previously treated with this product or other bovine haemoglobin based oxygen carriers



# Oxαpex®

A highly purified  
and stabilized  
haemoglobin  
solution for  
treating dogs  
with anaemia

## ABOUT US

**New Alpha Innovation** is a dedicated innovator in the global veterinary market. Our vision is to advance life sciences and improve animal health. We currently develop and manufacture high quality, life-saving haemoglobin based therapeutics for animals. Established in 2007, New Alpha Innovation owns and operates licensed GMP manufacturing and world-class R&D facilities around the world.

## RAPID

bridging for oxygen delivery

## READY

to administer & superior shelf life


## RELIABLE

with proven safety profile

## New Alpha Innovation New Zealand Limited

 66 Riverlea Road, Hillcrest,  
Hamilton 3216, New Zealand

 (64) 0800 463 9269

 (64) 027 639 2066

 [nz.info@newalphainnovation.com](mailto:nz.info@newalphainnovation.com)

This material is for veterinarian use only. For more information, please refer to package insert.

Oxapex is a Restricted Veterinary Medicine. Available only under veterinary authorisation.

Registered under the ACVM Act 1997 No. A010809.

© 2023 New Alpha Innovation New Zealand Limited. All Rights Reserved.



[www.oxapex.com](http://www.oxapex.com)